



Palm Trees & Cedars

(Ps. 92)

A Monthly Newsletter from the Senior Adult Ministry

MAY 2016

“The Church still needs you. She appreciates the services which you may wish to provide in many areas of the apostolate; she counts on the support of your longer periods of prayer; she counts on your advice born of experience, and she is enriched by your daily witness to the Gospel.”

- St. John Paul II, Letter to the Elderly, 1999

From the coordinator - Catherine Bitting:



Welcome to the new, revised Newsletter! In an effort to continually broaden our outreach as the Senior Adult Ministry for the Catholic Diocese of Wichita, we are working to make the best use

of the resources which we have access to.

Did you know that **40%** of the registered parishioners in our diocese are over the age of 60? Wouldn't it be marvelous if every single one of those individuals had the chance to participate in the many and varied opportunities offered to serve others, draw closer to Christ, and become involved in our ministry? Now, please don't worry; there will be no change, and no omission of any information relating to Harvest House. Our newsletter will still be featuring all of the items that it has carried in the past, especially information regarding when the various Harvest House groups are meeting, etc.

To reflect the larger outreach, we're also testing out a new name: *Palm Trees & Cedars*. Psalm 92:14-16 is one of the many scripture passages that acclaims the older generation: **“The just shall flourish like the palm tree, shall grow like a cedar of Lebanon. Planted in the house of the LORD, they shall flourish in the courts of our God. They shall bear fruit even in old age, they will stay fresh and green, to proclaim: ‘The LORD is just; my rock, in whom there is no wrong.’”** Not only does it speak of flourishing and bearing fruit in 'old age,' but it states the purpose for doing so - and that purpose is to proclaim the righteousness of the Lord! This is why we exist! No matter what our age, no matter our profession, no matter our physical ability, we are all called to magnify the Lord in our words and deeds.

(316) 685-5240

bittingc@CatholicDioceseofWichita.org

From the Chaplain

Fr. Paul Oborny



My mother was my first teacher on how to live my life. She “trimmed my branches” when I started growing crooked. As a child I and my brothers helped with the farm work. During harvest one year we were offered a dollar

apiece if we would do some special work. As I started the task, I stopped and came to my mom in my childish way, asking for more money. She just firmly looked at me and told me to be quiet and finish the job. Yes, I got my branches trimmed that day - and I still remember the lesson. My branches still need trimming along the way. Thank you, Mom. AAAAAAAMENNNN!

Save the Date! Harvest House Anniversary Mass

The celebration of the 27th Anniversary of Harvest House in the diocese will take place on **Thursday, June 23, at the Cathedral of the Immaculate Conception, Wichita.** A big thanks to Bishop Carl Kemme for being our main celebrant for the **10:00 a.m. Mass!** There will be a rosary prior to Mass beginning at **9:30.** Mass will be followed by the yearly raffle, a delicious luncheon, and a short presentation.

For the raffle this year, a hand-made quilt will not be offered, as it has in the past, but the raffle will be offering an assortment of fabulous prizes, including two tickets for the Autumn Day Trip to Oklahoma to visit Tulsa Aquarium and the Tulsa Cathedral! There is no cost to attend the Mass, but all are invited to join for a luncheon as well! (Cost for luncheon is \$10 per person). Please call the office with any questions (316-685-5240). Information and registration can be found on the back of the newsletter.

The Year of Mercy Day of Service: ZipLock and Load!

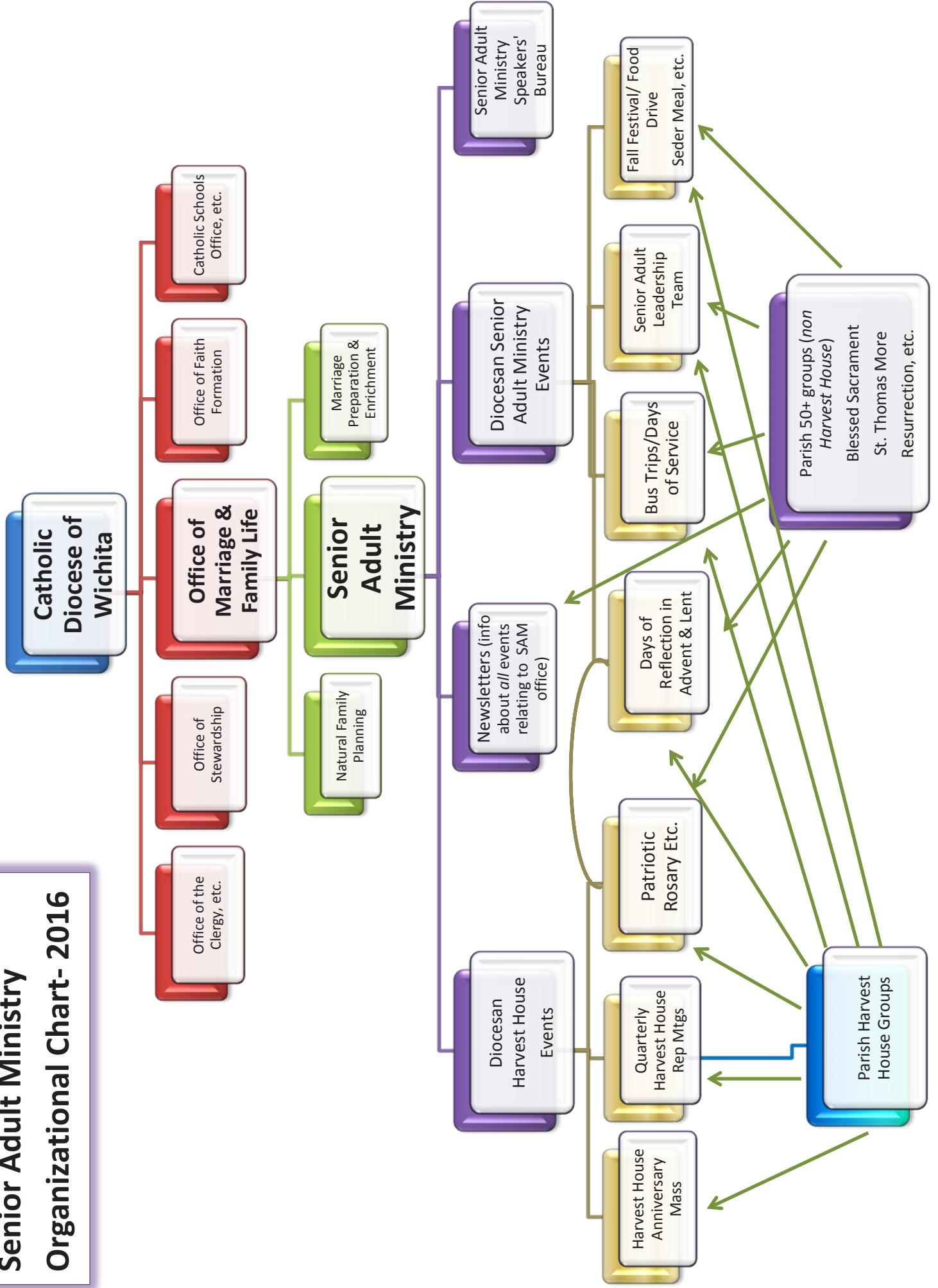
The Corporal Works of Mercy instruct all to ‘Give food to the hungry, and drink to the thirsty’; Come and join with others to prepare care bags for those who are homeless in Wichita! We will be meeting **Tuesday, June 7, from 9:00-11:30 a.m. in the St. Pius X room of the Cathedral** building to fill ziplock bags with necessities for the homeless. If interested in joining, please call the office at 316-685-5240 to sign up. If you are unable to join, but would like to contribute items to this project, please call the office for information about ways in which you can help! **‘Amen, I say to you, whatever you did for one of these least brothers of mine, you did for me.’ (Mt. 40)**

Please remember to send or call the office with your monthly meeting information if you would like to have it included in the newsletter.

Information must be received by the 15th of the month for the next month’s bulletin.

316-685-5240 • bittingc@CatholicDioceseOfWichita.org
437 N. Topeka, Wichita, 67202

Senior Adult Ministry Organizational Chart- 2016



Catholic Care Center Hosts Annual "Party for Parkinson's"

June 11 is the 4th annual Catholic Care Center Party for Parkinson's 5k/1 mile walk. This event is a benefit Parkinson's education and support to people in the Wichita area affected by this devastating disease. Some of the events that were made possible by the proceeds from last year's "Party" were a Parkinson's community exercise class, the annual symposium, caregiver education events, and a partnership with the Wichita State University Aging Studies program so that students will be inspired to pursue careers in aging services and advocate for age related causes.

This year's Party for Parkinson's will be an even better party because it will be held in the evening, **the 1 mile walk will begin at 6:30 p.m. and the 5k run will begin at 6:45 p.m.**; all participants of both the run and the walk will enjoy a cookout hosted the Knights of Columbus and a beer garden sponsored by House of Schwan following their event. Not only does this event raise money to support the fight against Parkinson's but it also helps to increase awareness. Today over 1 million people in America are living with Parkinson's disease. With the number of people being diagnosed growing each year, now is the time to do our part to help end Parkinson's! For more information, call Jennifer at (316)771-6593.

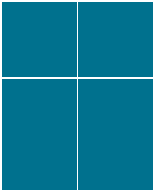
Don't miss the party! Register at www.PartyForParkinsons5k.com to be a part of Party for Parkinson's 2016!

Further Explanation

On the back of the Harvest House meeting list, you'll find a flow chart that outlines the structure of Senior Adult Ministry within the Diocese of Wichita. Harvest House, particularly those groups that operate at the parish level, are a vital, and integral part of our Senior Adult Ministry. My hope in sharing this is to show that Senior Adult Ministry is an inclusive ministry- praying with us, coming to an event here or there, or joining us on a bus trip should feel as if you are a member of a (larger) parish family! I'm a parishioner at St. Francis, Wichita, but once in a while, if we've struggled getting out the door, we end up at a different parish- where we encounter Christ at Mass, just as we would have in our own parish. All to say, it doesn't matter if you are in Altar Society or Knights of Columbus, or a prayer guild - if you are one of those 40% who are of an age to celebrate, work, pray, and serve with us, we sure hope you will do so!

Classifieds: Small group of Dynamite Seniors seeks like-minded Harvest House

The Harvest House based out of the Cathedral of the Immaculate Conception, Wichita is looking to join forces with another, somewhat similar group in order to strengthen both (or multiple) small groups. Are there individuals from Christ the King, St. Anthony, St. Joseph, Our Lady of Perpetual Help or other parishes that might wish to band together to possibly form a combined Harvest House? If interested, please call Catherine at 316-685-5240.



Senior Adult Ministry
Office of Marriage and Family Life

CATHOLIC DIOCESE OF WICHITA

Non-Profit Org.
U.S. Postage
Paid
Permit No 152
Wichita, KS

437 North Topeka
 Wichita, KS 67202
 (316) 685-5240

Return Service Requested

Reservation Request Harvest House Anniversary Mass

Please fill out and return with payment if you will be joining us for Mass and luncheon on June 23

Return with payment to: **Senior Adult Ministries**
Office of Marriage & Family Life
437 N. Topeka
Wichita, ks 67202

Cost per person is \$10 (Please make checks payable to Catholic Diocese of Wichita).

For information contact Catherine Biting at 316-685-5240.
Please have your registration in by June 15!

Name: _____

Address: _____

City: _____

State: _____ Zip: _____ Phone: _____

Parish: _____

I wish to obtain ____ raffle tickets and have included my donation of \$ _____ here.

Raffle ticket suggested donation is one chance for \$1, or 6 chances for \$5.

Donations accepted but not required. Winners subject to applicable local, state and federal taxes.