

# ST. KATHARINE DREXEL CATHOLIC SCHOOL FUND 2015 – 2016 ANNUAL REPORT

Catholic Diocese of Wichita

# It is our responsibility, through stewardship, to support the formation and education of our young people.

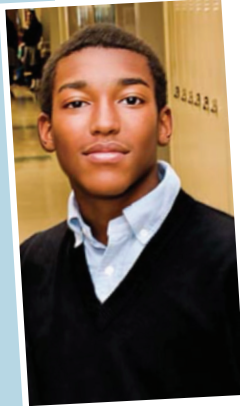


**IN THE 2015/2016 SCHOOL YEAR, 1557 STUDENTS RECEIVED A CATHOLIC SCHOOL EDUCATION BECAUSE OF YOUR GENEROSITY.**

### PARISHES RECEIVING FUNDS 2014/2015

Arkansas City, Sacred Heart  
Chanute, St. Patrick  
Coffeyville, Holy Name  
Conway Springs, St. Joseph\*  
Fort Scott, Mary Queen of Angels  
Haysville, St. Cecilia\*  
Hutchinson, Our Lady of Guadalupe  
Independence, St. Andrew  
Kingman, St. Patrick\*  
Newton, Our Lady of Guadalupe\*  
Newton, St. Mary\*  
Ost, St. Joseph\*  
Parsons, St. Patrick  
Wichita, All Saints\*  
Wichita, Christ the King\*  
Wichita, Holy Savior\*  
Wichita, St. Anne\*  
Wichita, St. Joseph\*  
Wichita, St. Jude\*  
Wichita, St. Margaret Mary\*  
Wichita, St. Patrick\*  
Winfield, Holy Name

\*These parishes are eligible to receive funds to send students to Bishop Carroll and/or Kapaun Mt. Carmel Catholic High Schools.



"Thank you all for your donations to the St. Katharine Drexel Catholic School Fund. I know the Catholic Schools have higher standards academically and behaviorally. The religious environment is a blessing. I am thankful that I have been able to go to schools where every teacher can help me in some way in my faith."

Qualyn Reed  
Sophomore, Kapaun Mt. Carmel  
Holy Savior Catholic Academy Graduate  
Holy Savior Catholic Church Parishioner

"I have no words. I have to say 'thank you' ... thank you because they are the reason I'm here and they are the ones building my future."



Erik Diaz  
Freshman, Kapaun Mt. Carmel  
St. Margaret Mary Catholic School Graduate  
St. Margaret Mary Church Parishioner

### EXAMPLE OF HOW YOUR DONATIONS ARE USED

- Cover and provide for general overhead and expenses
- Pay teachers' salaries
- Hire aides in combined classrooms
- Improve technology; Purchase learning aids in the classrooms
- Send students to a Catholic high school
- Assist in offering opportunities to students of a second language
- Provide nurses, tutors, and counselors

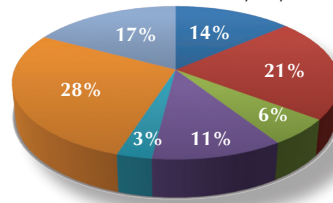
### CRITERIA FOR PARTICIPATION

Founded in 2004, the St. Katharine Drexel Catholic School Fund provides financial support for parishes in the Diocese of Wichita which practice and promote stewardship as a way of life, provide no less than 50% of their parish ordinary income for Catholic education (grade school and high school), and have at least 30% of school families meeting the criteria for the free or reduced hot lunch program.

### RESULTS FOR THE FISCAL 2015/2016 SCHOOL YEAR AS OF APRIL 1, 2016

REVENUE	Amount	Percentage
Parish Restricted	\$ 238,918	14%
General/Unrestricted	\$ 377,093	21%
Walk in Sister's Shoes	\$ 97,505	6%
Drexel Endowments	\$ 193,350	11%
Other designated funds	\$ 51,975	3%
Support from Wichita metro area parishes	\$ 486,444	28%
Support from Wichita Catholic High Schools	\$ 300,000	17%

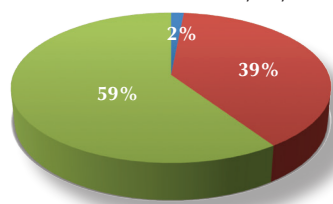
**TOTAL REVENUE \$1,745,285 100%**



### DISTRIBUTIONS

Expenses (mailing, printing, etc)	\$ 26,432	2%
To parishes for the purpose of funding Catholic school education	\$ 682,409	39%
To parishes for funding students at Catholic High Schools	\$ 1,036,444	59%

**TOTAL DISTRIBUTIONS \$ 1,745,285 100%**



### DESCRIPTION OF REVENUE CATEGORIES

**Parish Restricted** – These funds have been restricted by the donor to a particular parish.

**General/Unrestricted** – These funds are used where there is greatest need.

**Walk in Sister's Shoes** – These funds are raised annually in our Catholic schools from the feast of Epiphany to the feast of St. Katharine Drexel (March 3).

**Drexel Endowments** – These funds represent the income earned from 22 endowments that have been established over the years for the purpose of The Drexel Fund.

**Other designated funds** – These funds are allocated on an annual basis to many ministries of the diocese and this year were used for the support of The Drexel Fund.

**Support from Wichita metro area parishes** – These funds come from the Wichita metro area parishes in order to support sending students to Bishop Carroll and/or Kapaun Mt. Carmel Catholic High Schools.

**Support from Wichita Catholic High Schools** – These funds are contributed from the Wichita Catholic high schools to support parishes that send students to the high schools.

### DESCRIPTION OF DISTRIBUTION CATEGORIES

**Expenses** – Direct costs associated with the solicitation of Drexel funds.

**To parishes for the purpose of Catholic school education** – Money provided to parishes which either have a Catholic school or send students to a Catholic school and meet the criteria for participation in The Drexel Fund.

**To parishes for funding students at Catholic High Schools** – Money provided to parishes to pay for qualified students to attend one of the two Wichita Catholic high schools.

### YOUR GENEROSITY IS APPRECIATED.

CHANGE FROM 2014/2015 YEAR: **+7%**  
OR **\$129,387 MORE** FOR OUR  
DREXEL SUPPORTED PARISHES TO PROVIDE  
A STRONG CATHOLIC EDUCATION!

## Our Mission

TO ASSIST PARISHES THAT STRUGGLE FINANCIALLY TO CARRY OUT THE MISSION OF CATHOLIC EDUCATION IN A PARISH SCHOOL

**"The longer I have the privilege of shepherding our diocese, the newness will recede, but the realization that Catholics in this diocese and beyond, whether they have children in a Catholic school or not, support the formation of the young people is absolutely amazing."**

MOST REVEREND CARL A. KEMME  
Bishop of Wichita

